



Expression of interest form

Implementation Advisory Group
Arts and Disability Plan



Easy Read



Australian Government
Department of Infrastructure, Transport,
Regional Development, Communications and the Arts
Office for the Arts



We
support



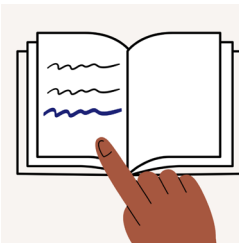
About Easy Read



This is an Easy Read form.



Easy Read uses pictures to explain ideas.



New words are **bold and blue**.

We tell you what new words mean.



Easy Read includes key information.



You can ask us for more information.



All contact information is at the end of this form.

About this form

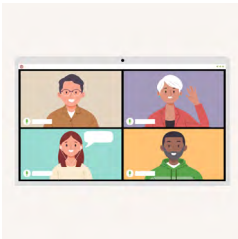


This form is by The Office for the Arts.



The form starts on **page 13**.

We will tell you more about the work first.



You can do the form to apply to join our **Implementation Advisory Group**.

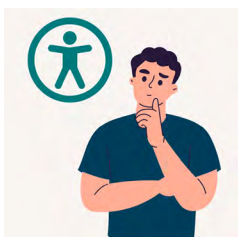


The group includes d/Deaf and disabled

- artists

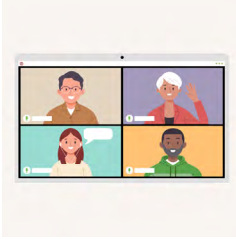


- arts and screen workers.



The group helps us plan ways to meet the needs of d/Deaf and disabled people.

Who can be in the group?



13 d/Deaf or disabled people can be in the group.



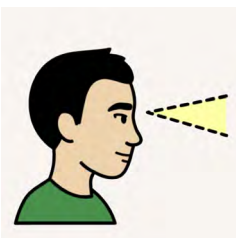
11 people can be **Regular Members**.



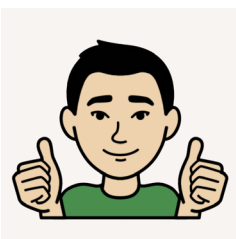
Regular Members might have been advisors in the past.



Regular Members must have a passion for helping the disability community.

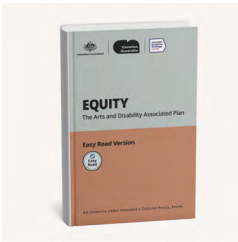


2 people can be **Observer Members**.



Observer Members might not have been advisors in the past, but still want to help.

What will the group do?



The group will help us follow the **Arts and Disability Associated Plan.**



The plan says how we will meet the needs of d/Deaf and disabled

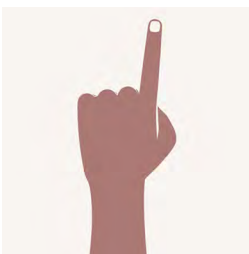
- artists



- arts and screen workers

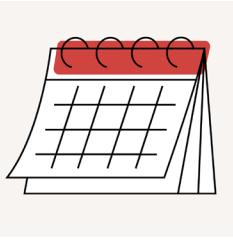


- people who like the arts.



Members must be part of the group for at least 1 year.

About the group meetings



Meetings happen 4 to 8 times a year starting mid 2025.



The length of meetings might be different each time.



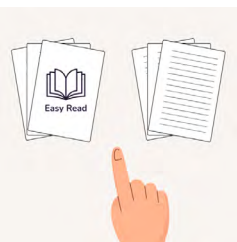
Most meetings are online.



We might meet in person once every 2 years.



Meetings are **accessible**.



Accessible means everyone can join in.
For example, Easy Read meeting information.

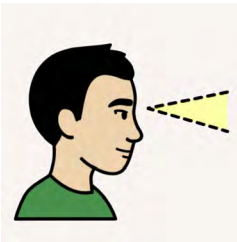
How many hours will you work?



Regular Members work about **30 hours** a year.



30 hours includes work before and after meetings.



Observer Members work about **15 hours** a year.



Observer Members can choose if they want to do work before meetings.

What are you paid?

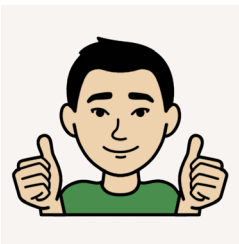


Your pay will depend on how long each meeting goes for.



If a meeting goes for **2 hours**

- Regular Members get \$278.40 for their time in the meeting and work before the meeting



- Observer Members get \$139.20 for their time in the meeting.

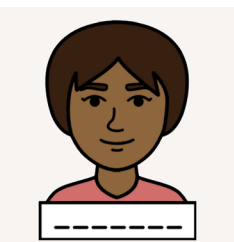
How we use your information



This is a **Privacy Collection Notice**.



The notice explains how we keep your **personal information** safe.

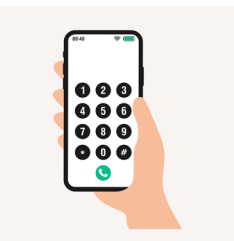


Examples of personal information might be

- your full name



- where you live



- your phone number.

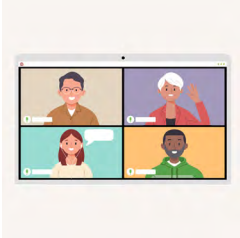


We follow laws to keep your information safe.



We only use your information to talk to you about

- your application



- working on the advisory group.

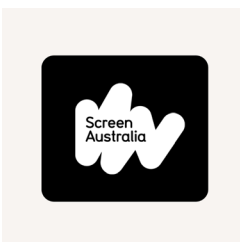


We might share your contact information with other people we work with.

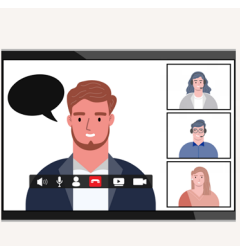


Other people might be

- workers at Creative Australia



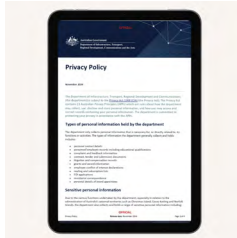
- workers at Screen Australia



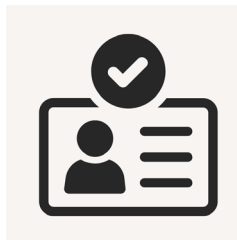
- a **group facilitator** or the person who runs group meetings.



Your name and state will be shared on our website if you join the group.



We follow a **Privacy Policy**.

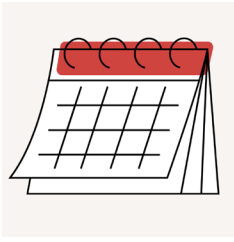


The policy includes rules for government workers to keep your information safe.



There is a link to the policy at the end of this book.

How to apply



Apply by Monday 5 May 2025 before 4 pm Australian Eastern Standard Time.



Apply in a way that works for you. You can

- email this form to us



- print and post this form to us



- call us between 9 am and 5 pm weekdays



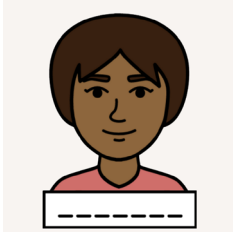
- send a video or audio file. Email us for the link to share your video or audio file.



Contact us for help to apply in a way that works for you and your access needs.

The form starts here

Your contact information



Write your full name in the box below.

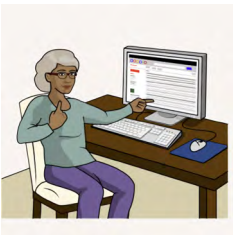


Write your email in the box below.

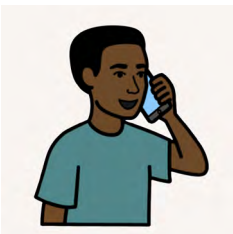


Write your phone number in the box below.

Tick your best contact method



Email



Phone call



Text message

Tick the box to show where you live.



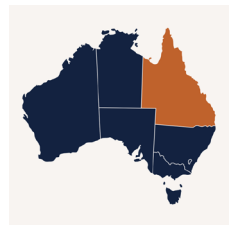
The ACT



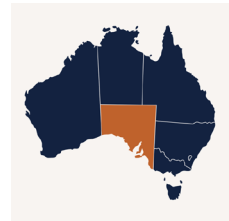
New South Wales



Northern Territory



Queensland



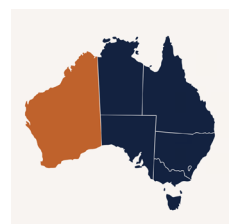
South Australia



Tasmania

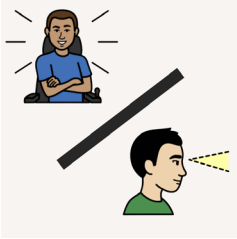


Victoria



Western Australia

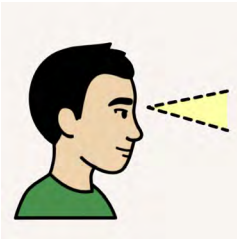
What type of member do you want to be?



Tick the member you want to be.
You can tick 1 or both boxes.



Regular Member



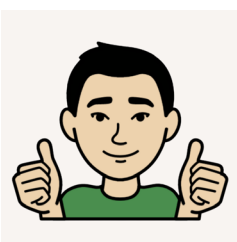
Observer Member



Regular Members might have
been advisors in the past.



Regular Members must have a passion
for helping the disability community.



Observer Members might not have been
advisors in the past, but still want to help.

The reserve list



Do you want to be on our **reserve list** if there is no role for you right now in the group?



A reserve list means we

- keep your contact information



- tell you if a role comes up for you in the future.

Tick the best option for you.



Yes you want to be on a reserve list



No you do not want to be on a reserve list

Your work background



Tick how long you have been in the work force, including **volunteer** work.



Volunteer means you are not paid for the activity.

1 to 5 years

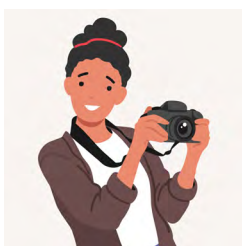
5 to 10 years

10 to 20 years

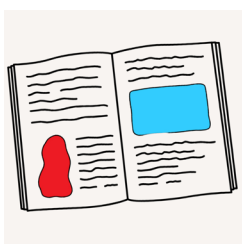
More than 20 years

You have not worked before

Tick 1 to 3 areas you are most interested in.



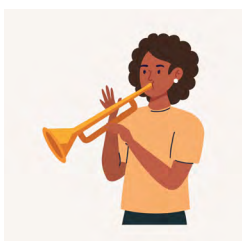
Visual arts and craft



Literature such as writing stories



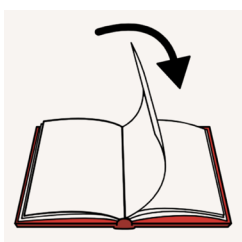
Performing arts such as dance or theatre



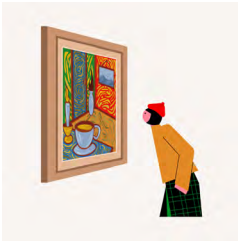
Music



Festivals



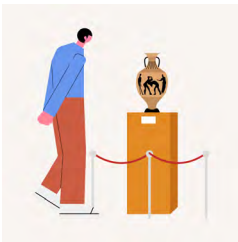
More options are on the next page.



Galleries



Libraries



Museums



Screen or digital games



First Nations arts and language



Community and culture projects

Your fit for the role



We want our group to include the voices of people who are

- d/Deaf



- disabled.



Are you a person who is d/Deaf or disabled?

Tick the best option for you.



Yes you are d/Deaf or disabled



No you are not d/Deaf or disabled



We want to know about your life as a d/Deaf or disabled artist or arts worker.



You can choose what you share about your life.
For example

- good things



- hard things.



You do not have to explain your disability or health problems if you do not want to.



There are boxes on the next few pages for you to tell us more about you.



Your answers **cannot** be longer than **450** words.



1. What is it like for you to be a d/Deaf or disabled artist or arts and screen worker?

Write your answer in the box below.



2. Why are you a good fit for our group?

For example, have you worked a lot in the arts?

Write your answer in the box below.



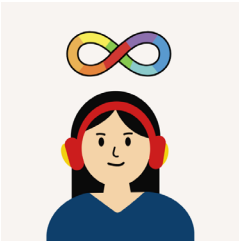
3. Why do you want to join the group?

Write your answer in the box below.

Your lived experience



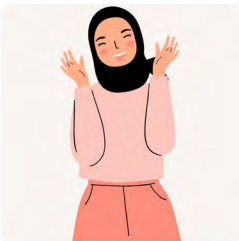
We want our group to include people with different **lived experience**.



Lived experience includes who you are and how you live as a d/Deaf or disabled person.



You do not have to answer any of these questions if you do not want to.



Nothing bad will happen if you do not answer the questions about your lived experience.



If you want, you can tell us your disability in the box below.



Are you Aboriginal or Torres Strait Islander?



Yes



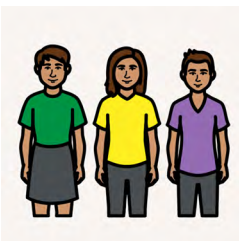
No



You do not want to say



If you want, write your **gender identity** in the box below.



Your gender identity is how you see yourself.
For example, a man, woman or something else.



If you want, write your age in the box below.



If you want, write if you are **LGBTIQ+**.

LGBTIQ+ includes many types of queer identities.



If you want, write if you are **CALD**. CALD stands for culturally and linguistically diverse.



Tick if you live in regional or remote Australia.



Yes



No

Extra documents



There are 2 extra documents you must send to us with this form.



The extra documents include

- your resume



- **written references** from 2 people you worked with in the past.



Written references say what you are like at work. For example, your skills.



You can use references from volunteer work.

Your declaration



A **declaration** means you agree that

- you have read this document



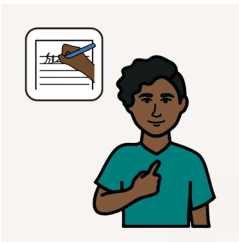
- we can contact you about the group



- you understand the Privacy Collection Notice



- you might need to sign other forms to be part of the group later on



- you are the person who filled out this form or the form was filled out by someone you trust.

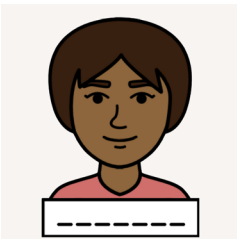


You also agree that

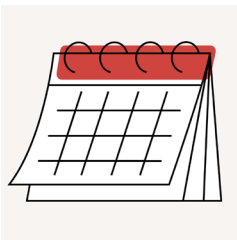
- you will tell us if you find out information in this form is not true



- it is against the law to give false information on purpose.



Write your full name in the box below.



Write the date today.



Apply by Monday 5 May 2025 before
4 pm Australian Eastern Standard Time.

Contact information



Contact the Office for the Arts for more help.



See our website at www.arts.gov.au



Email us at arts.disability@arts.gov.au

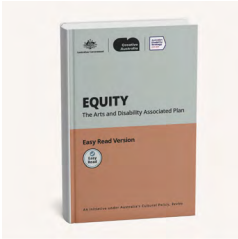


Call us on 1800 080 090



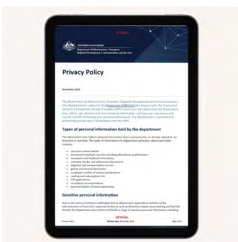
Post a letter to us at
Office for the Arts
GPO Box 594
Canberra ACT 2601

Learn more



Read our Arts and Disability Associated Plan

www.arts.gov.au/what-we-do/arts-and-disability/equity-arts-and-disability-associated-plan



Read our Privacy Policy

www.infrastructure.gov.au/departments/privacy-policy



Learn more about *Revive*

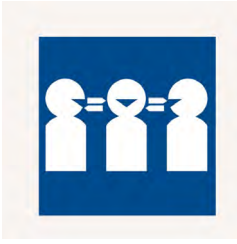
www.arts.gov.au/publications/national-cultural-policy-revive-place-every-story-story-every-place



Learn about Australia's Disability Strategy

www.disabilitygateway.gov.au/ads

Help to call



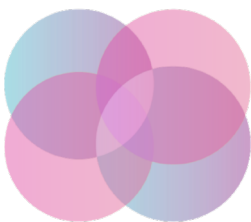
Call 131 450 for the Translating and Interpreting Service if English is not your first language.



Call 1800 555 660 for the National Relay Service if you have communication support needs.



Call 1800 555 677 if you use a teletypewriter or TTY.



Embrace **Access**

Embrace Access wrote this Easy Read book. This book was co-designed by an advisor with lived experience of disability. You must ask for permission to use the words and images in this book. Picture Communication Symbols © 1981–2025 by Tobii Dynavox. All Rights Reserved Worldwide. Used with permission. Boardmaker® is a trademark of Tobii Dynavox. Contact the team at Embrace Access to create your own co-designed Easy Read book. W: www.EmbraceAccess.com.au E: info@EmbraceAccess.com.au M: 0433 759 535